

### CCTV Survey - Foul Drainage System

#### General overview

The system is predominantly made of 100mm/4" clay pipe with a small section of 110mm uPVC going onto 160mm uPVC prior to the Wessex Water main, the short section of 110mm uPVC seems to be an abandoned/unused pipe as no dye came out of this pipe during the survey. Average depth of the chamber and pipe runs is 750mm with no run over 4 meters in length.

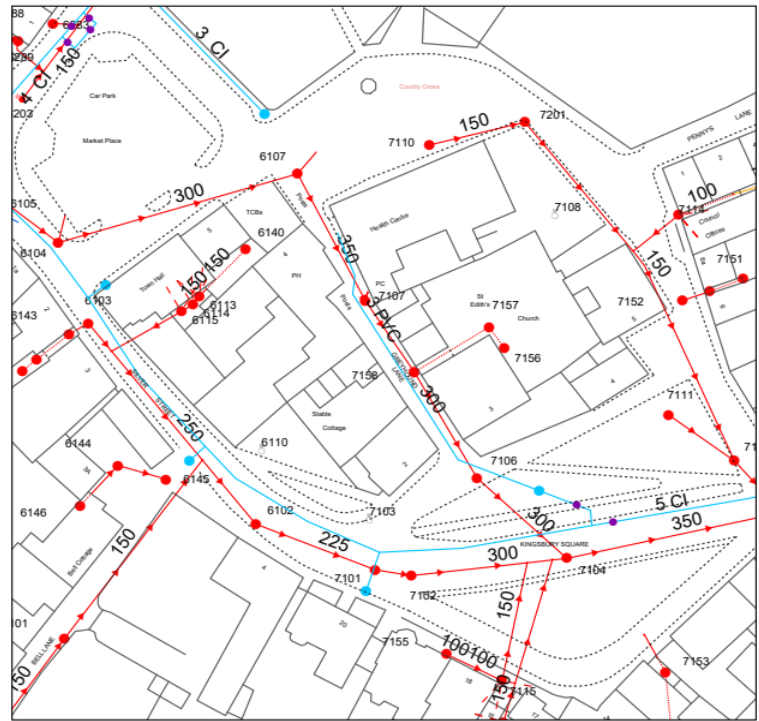
There were some misaligned joints noted with standing water which points to insufficient falls and pipes dropping, in the chamber there was a blockage upon removing the cover this could be put down to insufficient flush on the gents' toilets as well as heavy scaling causing the waste to catch and not flow through smoothly.

#### Findings

The current foul drainage system is in a reasonable condition but will require some minor work to be undertaken. Initially the system will require high pressure jetting to remove the scale build up to ensure a smooth run through the pipe runs preventing waste and tissue catching and reducing the chances of blockages. To prevent major excavations to be undertaken, lining of the pipes could be carried out where required to seal the misaligned sections and generally strengthen the system.

#### Recommendation

A program of routine maintenance/jetting will keep the system in a good condition and will prevent scale build up from becoming a major issue.



Reproduced from the Ordnance Survey map with the permission of the Controller of His Majesty's Stationery Office. © Crown copyright and database rights (2012) OS 4000084829

WATER MAINS	SEWERS	STRATEGIC	PUBLIC	PRIVATE	SECTION 104	OTHER WESSEX PIPES	NON-WESSEX / UNKNOWN
— Distribution	— Foul	— Surface	— Surface	— Surface	— Surface	— Rising Mains	— Private Rising Mains
— Washout	— Surface	— Combined	— Combined	— Combined	— Combined	— Standy Rising Mains	— Culverted Watercourse
— Raw Water	— Abandoned	— Abandoned	— Abandoned	— Abandoned	— Abandoned	— Effluent Disposal	— Highway Drain
— Abandoned	— Private	— Private	— Private	— Private	— Private	— Overflow	— Use Unknown
— Private	— Private	— Private	— Private	— Private	— Private	— Syphon	— Status Unknown

FITTINGS	STRUCTURES	OTHER STRUCTURES
● Hydrant	○ Manhole - Foul	□ Chamber
● Other	○ Manhole - Surface	□ Tunnel
	○ Manhole - Combined	□ Storage Tank
	○ Inlet	□ Interceptor
	○ Outfall	
	○ Lamphole	
	○ Bifurcation - Foul	
	○ Bifurcation - Surface	
	○ Bifurcation - Combined	
	○ Combined Sewage Overflow	
	○ Pumping Station - Surface	
	○ Gully	
	○ Vent Column	
	○ Rodding Eye	
	○ Catchpit	
	○ Flushing Chamber	
	○ Soakaway	
	○ Non Return Valve	
	○ Air Valve	
	○ Hatch Box	
	○ Washout	

<b>Wessex Water</b>	<b>YTL GROUP</b>
Date: 31/10/2025	Centre: 409708E, 131158N
Scale: 1:625	(when printed at A4 size)



There were some misaligned joints and standing water in the disabled pipe run, which may point to insufficient fall.



Scale in urinal pipe



Inspection Chamber with blockages



Blockage clear and showing heavy scale





Minor misalignment on gents basin run



Heavy scale on urinal pipe run



24-10-2025

1.50 M

09:35:26

Misaligned pipe with standing water in disabled/ladies



24-10-2025

1.50 M

09:43:14

Misaligned pipe on gents basin run



24-10-2025

5.10 M

09:37:11

Misaligned joint in gents toilet line

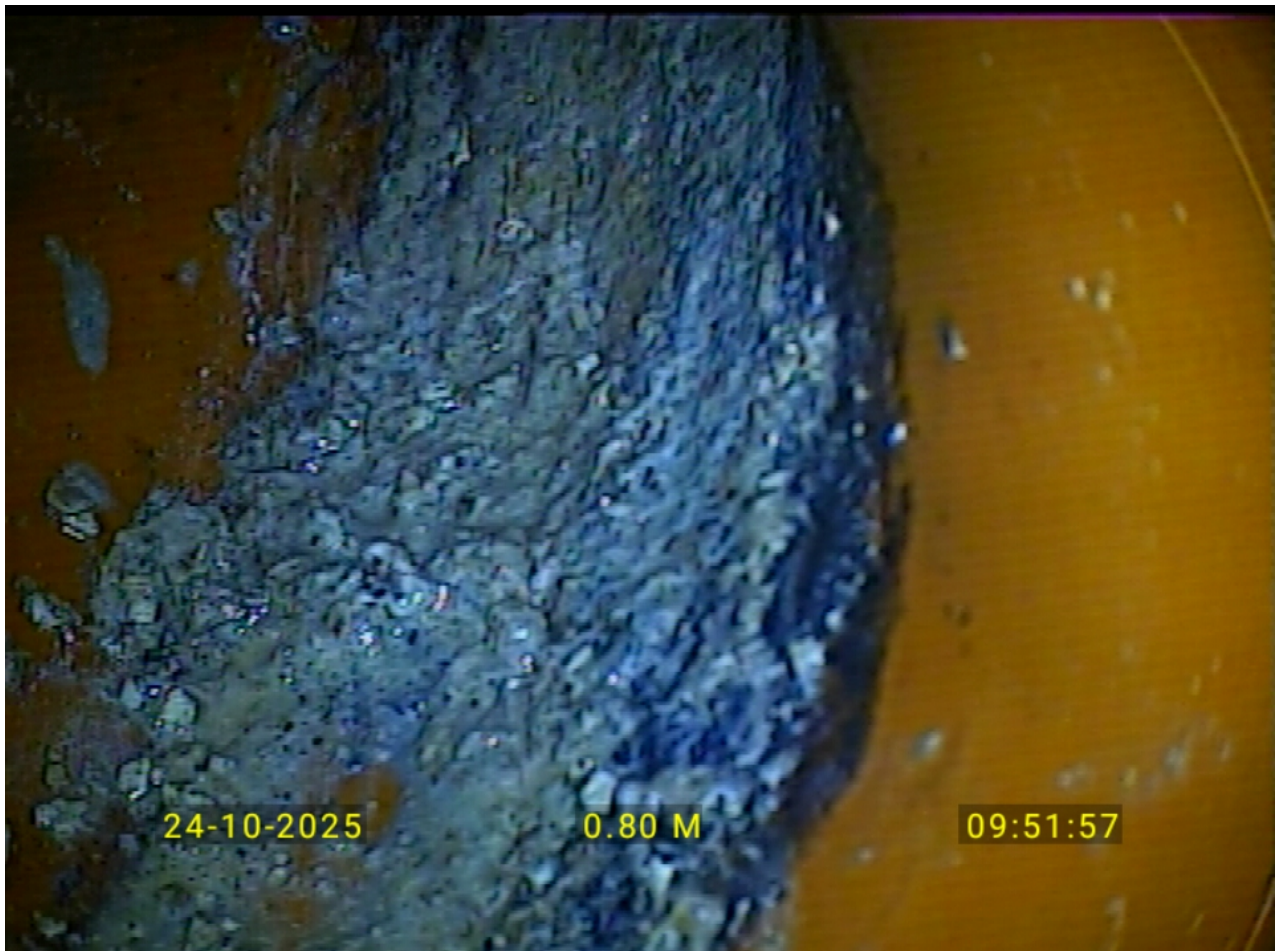


24-10-2025

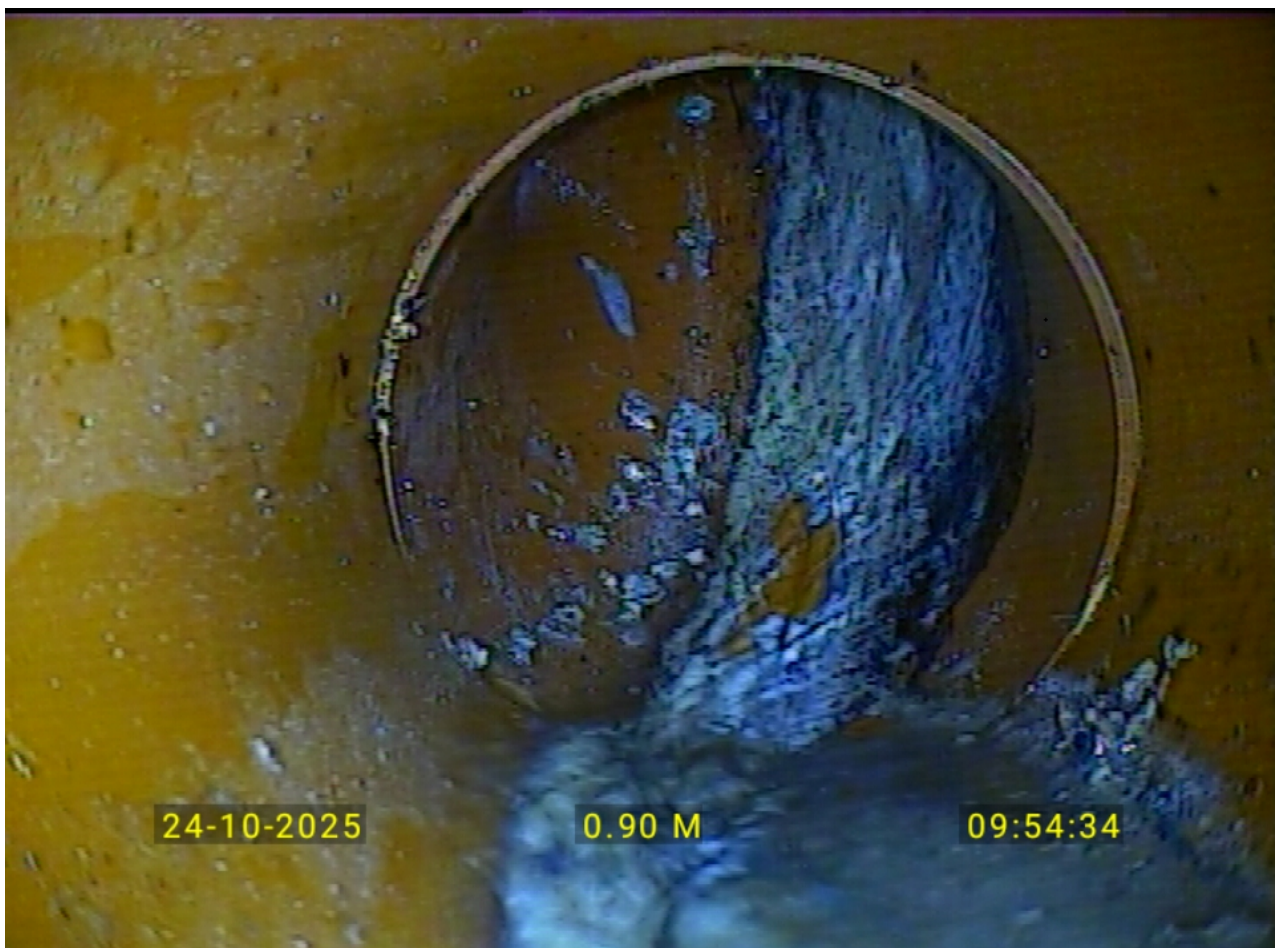
1.60 M

09:39:06

Scale build-up shown in gents toilet run



Urinal run - Unable to pass



Urinal Flush