



Wilton
Town Council

Annual Report 2025-2026

April 2026

Honouring our History, Shaping our Future

www.wiltontowncouncil.gov.uk

Mayor's Welcome



Cllr Chris Harrison
Mayor of Wilton

I'm pleased to share Wilton Town Council's Annual Report for 2025–26 — and if I'm honest, it's been quite a year.

We came in with a new officer team, an ambition to do things better, and a lot of work to get on with. What this report shows is that we've made a decent start. The basics — maintaining our parks and open spaces, keeping our buildings in order, making sure the council is actually visible and accessible — have had proper attention. The offices are open every weekday, our meetings have moved to ground-floor venues at Wilton Baptist Church so more people can actually attend, and we've been more present on social media and in the community than the council has been for a while.

None of that is headline stuff. But it matters, because a council that's got the foundations right is one that can actually deliver on bigger commitments. And we do have bigger commitments. The public toilet renovation, Pavilion Car Park improvements, an upgrade to the Christmas lights, and progressing the 20mph scheme are all on the list for 2026–27. These are things residents have wanted for a long time, and we're getting on with them.

Underpinning all of it is our Strategic Plan to 2030 — worth a read if you haven't already. It sets out where we want Wilton to be, and what we're committing to along the way.

It's a privilege to serve as your Mayor. I hope this report gives you a clear picture of what your council has been doing, and where we're headed.

Mayor's Charity for 2025–2026

The Mayor's Charity for the 2025-2026 Municipal Year was chosen by Cllr Alexandra Boyd, Mayor of Wilton from May 2025 to January 2026.



Seeds4Success is a Wiltshire-based youth work charity, which provides opportunities for personal and social development for young people living in South West Wiltshire. Their work enables young people to access programmes that develop practical skills, enhance education, improve employability, provide recreational activities, conserve the natural environment and strengthen the local community.

During her time as Mayor, Cllr Boyd raised £720 for the charity.

A cheque presentation took place during our Annual Town Meeting in April 2026.

Our Town



Wilton is a historic market town with over two millennia of heritage. Once the ancient capital of Wessex and the town from which Wiltshire takes its name, it is nationally recognised for Wilton Carpets and internationally associated with Wilton House. The town's distinctive riverside setting, at the confluence of the Rivers Nadder and Wylde, shape its setting and amenity. The town's historic churches, civic traditions and strong sense of identity make Wilton both a place of deep history and a living, working market town.



The Council embraces its responsibility as a custodian of local heritage — including artefacts, regalia, charters and civic records — ensuring appropriate conservation, storage and, where suitable, digitisation so that the story of Wilton can be preserved and shared for future generations.

Key heritage assets include Wilton House and grounds; the Italianate Church; Old St Mary's Church ruins; historic town charters; The Guild; and established river walks.

Our guiding philosophy is to work proportionately, practically and transparently, ensuring that every decision delivers real value for Wilton.



Meet Your Councillors



Mayor of Wilton
Cllr Chris Harrison



Deputy Mayor
Cllr Charlotte Blackman



Councillor
Angela Alexander



Councillor
Gary Blandford-Hull



Councillor
Alexandra Boyd



Councillor
Michelle Ditton



Councillor
Peter Edge



Councillor
Claire Forbes



Councillor
Maria La Femina



Councillor
Phil Matthews



Councillor
Mick Whillock

What we do

Wilton Town Council is the parish council for Wilton. The Council embraces its responsibility as a custodian of local heritage, so that the story of Wilton can be preserved and shared for future generations.

We are also responsible for a number of key community assets:



Castle Meadow recreation ground



Castle Meadow Pavilion & outdoor gym



Tennis courts at Minster Street



Minster Street park and play area



Bulbridge Park



Wishford Road Recreation ground



Town centre public toilets



Cemetery at Shaftesbury Road



Old St Mary's Churchyard



Speed Indicator Devices



South Street car park



Council Offices



Noticeboards



Benches



Litter Bins



Bus Shelters

What we did in 2025–26

Over the last financial year, Wilton Town Council has appointed a new team of Council Officers to undertake the Council's work and help drive projects forward.

We have redeveloped our website, updating it to better reflect the Council's vision for the town and to allow for easier updating; keeping you up-to-date with what your Town Council is doing for your town.



We have improved our maintenance schedules, with better oversight of grounds maintenance and other contractors, enabling us to work towards keeping our buildings and open spaces looking their best and functioning in a more reliable way.

The Town Council Offices are now open to the public on every weekday from 10am to 2pm.

We have improved the accessibility of Town Council meetings by moving them out of our first floor Council Chamber to ground floor spaces at the Wilton Baptist Church in the heart of our town.




We have improved our communications, through the new website and extended opening hours, and increased our presence on social media. We have also held our first listening event, at Wilton Village in mid-March and produced a resident leaflet to give you a better understanding of what we do and what we're planning to do over the next year.

We believe that we have set firm foundations from which to continue improving our town, and have developed a Strategic Plan which outlines the Council's plans up to the year 2030.

You can read our Strategic Plan on our website at:

<https://www.wiltontowncouncil.gov.uk/policies/financial-information/>

2025-2026 in Numbers



12 acres of open spaces



53 Pieces of Play Equipment Inspected



21 Council & Committee Meetings



6 Parks Maintained

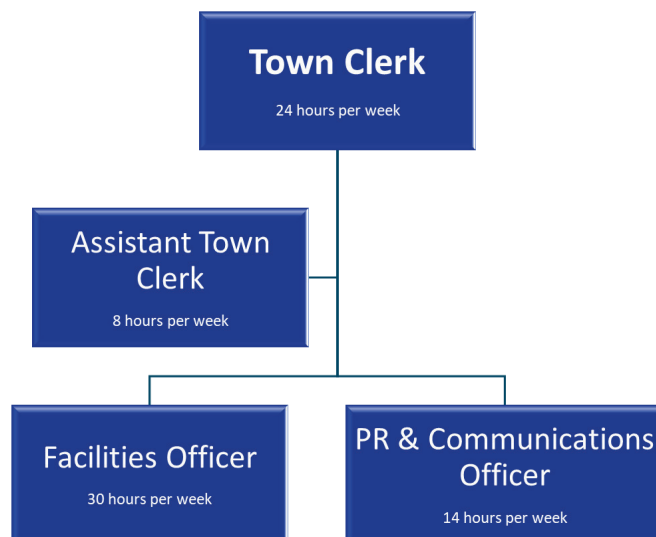


11 Town Councillors

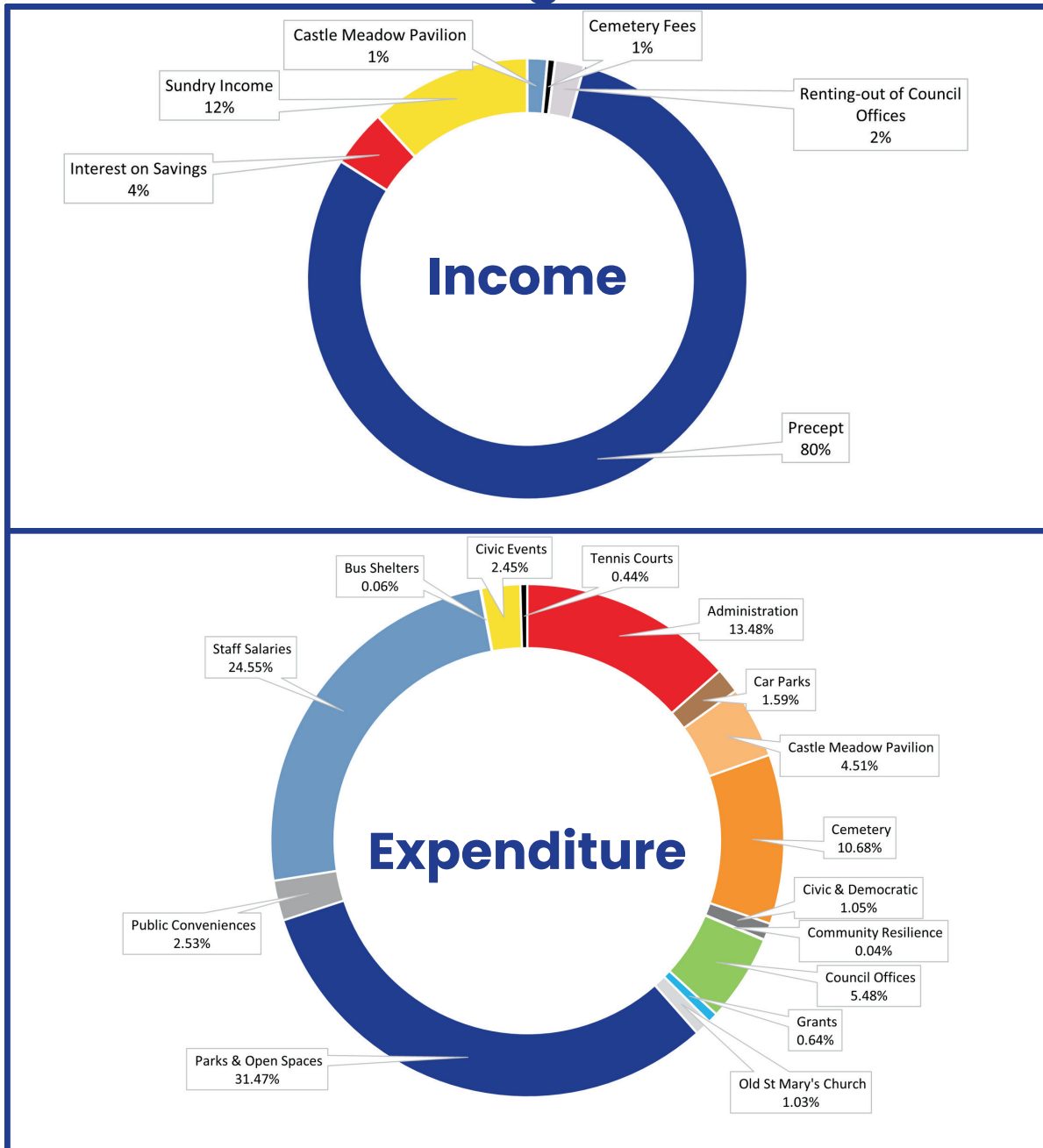


4 Part Time Council Officers

Our Council Officers



2025–2026 Budget Breakdown



End of Year figures are unaudited at time of publication

How we will Spend the Precept in 2026–2027



- | | | | |
|---|--|---|--|
|  | Public Conveniences
0.96% |  | Council Offices
3.01% |
|  | Administration
29.99% |  | Community Resilience
0.38% |
|  | Parks & Open Spaces
15.46% |  | Civic & Democratic
3.58% |
|  | Old St Mary's Churchyard
0.96% |  | Cemetery
2.48% |
|  | Grants
0.57% |  | Castle Meadow Pavilion
1.78% |
|  | Car Parks
1.66% |  | Public Toilet Refurbishment
26.75% |
|  | Pavilion Car Park Improvements
9.55% |  | Christmas Lights Update
2.87% |

Our Plans for 2026-27



The Town Centre Public Toilets renovation is one of Wilton Town Council's key 2026 priorities. The project will modernise and replace ageing facilities to ensure the town centre has reliable, safe, accessible and hygienic public conveniences that meet the needs of residents, visitors and local businesses. This investment supports Wilton's strategic goals of improving civic infrastructure, enhancing visitor experience, and reinforcing pride in the town centre.

The Pavilion Car Park improvement project forms a key part of Wilton Town Council's infrastructure and resilience programme for 2026. Phase 1 focuses on essential upgrades to drainage, surfacing and accessibility to ensure the car park remains safe, functional, and suitable for growing community and event use at Castle Meadow. This phase lays the groundwork for future enhancements while ensuring immediate health-and-safety, usability and durability benefits.



To maintain a reliable, safe and visually attractive display, Wilton Town Council will undertake a comprehensive review and upgrade of the town's Christmas lights in 2026, focusing on safety compliance, asset condition, performance and long-term cost-efficiency. A key component of this year's work is determining the most sustainable model for delivering the display in future years and ensuring the Council partners with a reputable, specialist lighting supplier with proven capability in high-quality, low-energy, innovative festive lighting installations.

Following the completion of the 20mph feasibility study in April 2025, the Council will now progress to the next steps toward delivering a reduced speed limit in and around the town centre.

This next phase will involve reviewing the feasibility findings in detail, preparing the required supporting information for Wiltshire Council, and ensuring that the proposed 2026/2027 implementation can proceed promptly once approval is granted.





Improvement works at the cemetery will focus on resurfacing and levelling pathways to improve accessibility and drainage, alongside installing new, sympathetically designed signage to support navigation and uphold the dignity of the site. To strengthen safety and compliance, the Council will introduce in-house memorial stability testing, including trained staff undertaking regular, risk-based inspections, maintaining structured audit logs, communicating with grave deed holders where required, and ensuring any unsafe memorials are made safe promptly and in accordance with national guidance, improving consistency, responsiveness and long-term maintenance efficiency.

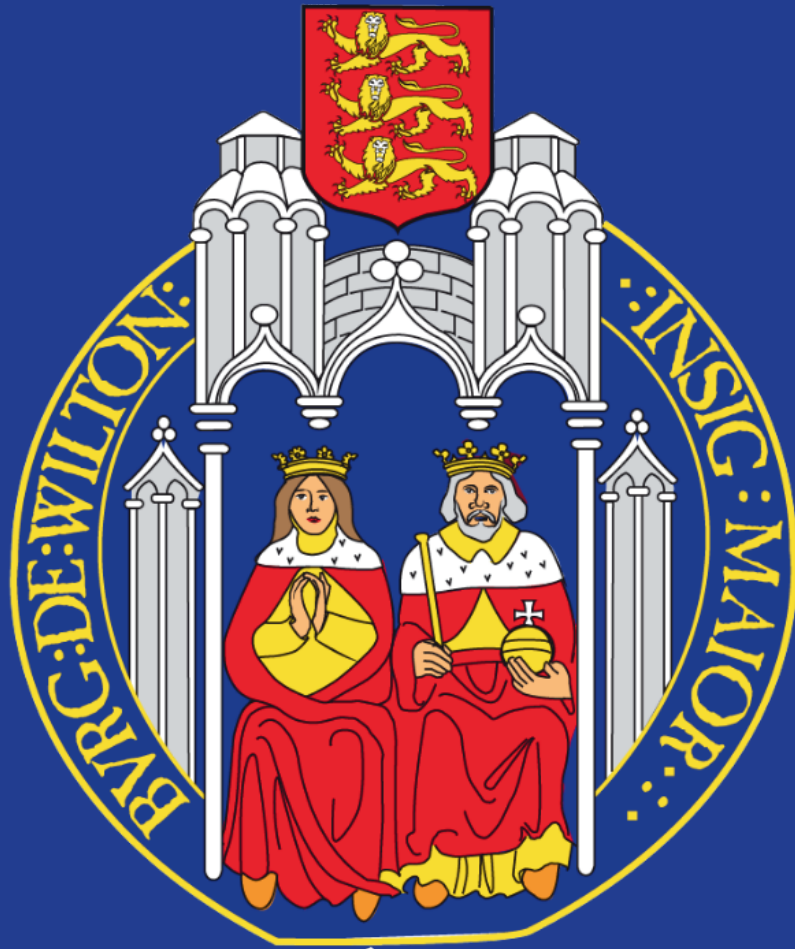
The Council will review the long-term feasibility of remaining in the current office location versus relocating to a more central site, ensuring that the Town Council remains visibly at the heart of its community and easily accessible to residents. As part of this assessment, minor energy-efficiency and fabric improvements will be undertaken to reduce operating costs, improve comfort and sustainability, and ensure the existing building remains functional and cost-effective while options for future accommodation are explored.



Flood prevention and river-management works will focus on targeted drainage improvements on Council-owned land, reducing surface-water pooling and strengthening resilience during periods of heavy rainfall, while maintaining close coordination with partner agencies such as the Environment Agency, Wiltshire Council and local flood groups to ensure a joined-up approach to catchment-wide water management. As part of this work, the Council will develop a proportionate Flood Plan that sets out roles, responsibilities and response actions, helping ensure that Wilton is better prepared for seasonal high-water events, supported by clear communication channels, documented site checks and practical mitigation measures that can be actioned quickly when needed.

The Town Council is committed to delivering the projects and actions set out in this Plan. We recognise that new or unforeseen demands will inevitably arise over the coming year, and it is important that the Plan remains both ambitious and adaptable. To support this, the project list will be reviewed twice per year, with a full, annual review of the Plan to assess progress, emerging needs, and any required adjustments.

Any new demands will be weighed carefully against the Council's available resources. In some cases, approving new projects may require deferring or replacing previously agreed actions unless additional capacity or funding becomes available. This balanced approach ensures that the Council remains responsive while continuing to prioritise value for residents and the long-term interests of the town.



Wilton Town Council

Honouring our History, Shaping our Future

Follow us on social media for all the latest news, updates and local events:

 @WiltonTownCouncil

 @WiltonTownCouncil

 @WiltonTownCouncil

The Council Offices are open from 10am to 2pm, Monday-Friday:

Council Offices
Kingsbury Square
Wilton
SP2 0BA

www.wiltontowncouncil.gov.uk