

NOTES:

DO NOT REMOVE THESE NOTES FROM THIS DRAWING

Land Development Services Ltd. own the copyright of this drawing. Their written consent must be obtained before this drawing is copied, forwarded to any third parties, or used for any purpose other than the one for which it was supplied.

This survey has been carried out to an accuracy consistent with the presentation scale noted below. Interrogated dimensions will therefore be within the tolerance associated with this scale. The same accuracies implied by the plotting scale are equally applicable to digital data supplied for CAD.

The horizontal & vertical control of this survey is based on Ordnance Survey grid as translated from GPS co-ordinates using the OSTN15 & OSGM15 transformation as supplied by OS. We have applied a reverse scale factor to maintain true ground distances. Vertical values may differ from existing OS benchmarks in the vicinity which should be disregarded. All levels should be taken from LDS survey stations.

While every effort is made to identify all visible above-ground features, it should be noted that there may be features obscured or inaccessible at the time of survey.

Boundaries shown are not necessarily legal boundaries.

All levels, heights, measurements and dimensions are in metres unless otherwise stated.

Eaves levels are taken at the bottom of the lowest roof line. Where underside of fascia or other features are surveyed these are recorded as such.

All below-ground features (including drainage, voids and services) have been identified from above ground and therefore all details relating to these (such as sizes, depth, pipe positions and alignments etc.) will be approximate only. Underground services have not been traced, but any visible surface features have been located.

Spot heights displayed within the road width are road/gutter levels, not top of kerb.

Trees have been drawn diagrammatically (i.e. circular) showing average canopy spread, however their true shape in plan will be different. Every effort has been taken to identify species, but where critical these should be verified by a specialist.

REV.

DATE

DETAILS

-

22/01/26

Original Issue
Surveyed by: AC
Drawn by: RE/VD

Services

BB

⚙️

Belgian Beason

BH

⚙️

Bowline

BL

⚙️

Belair

CB

⚙️

Cable TV

CDTV

⚙️

CCTV Cover

CNG

⚙️

Concrete

EP

⚙️

Electricity Pole

EL

⚙️

Earthing Rod

FL

⚙️

Flower Bed

FI

⚙️

Fire Hydrant

PL

⚙️

Plant

FP

⚙️

Flagpost

GATE

➡️

Gate

GP

⚙️

Gas Post

GV

⚙️

Gas Valve

GR

⚙️

Gravel

GS

⚙️

Grass

GC

⚙️

Gas Cover

TC

⚙️

Television Cover

WC

⚙️

Water Cover

LP

⚙️

Lamp Post

MS

⚙️

Manhole (as/Under Surface)

SH

⚙️

Shed

BSLT

⚙️

Bus Stop

MP

⚙️

Marker Post

MM

⚙️

Moving Man

MD

⚙️

Manhole

⚙️

⚙️

⚙️

⚙️

⚙️

⚙️

⚙️

⚙️

⚙️

⚙️

⚙️

⚙️

⚙️

⚙️

⚙️

⚙️

⚙️

⚙️

⚙️

⚙️

⚙️

⚙️

⚙️

⚙️

⚙️

⚙️

⚙️

⚙️

⚙️

⚙️

⚙️

⚙️

⚙️

⚙️

⚙️

⚙️

⚙️

⚙️

⚙️

⚙️

⚙️

⚙️

⚙️

⚙️

⚙️

⚙️

⚙️

⚙️

⚙️

⚙️

⚙️

⚙️

⚙️

⚙️

⚙️

⚙️

⚙️

⚙️

⚙️

⚙️

⚙️

⚙️

⚙️

⚙️

⚙️

⚙️

⚙️

⚙️

⚙️

⚙️

⚙️

⚙️

⚙️

⚙️

⚙️

⚙️

⚙️

⚙️

⚙️

⚙️

⚙️

⚙️

⚙️

⚙️

⚙️

⚙️

⚙️

⚙️

⚙️

⚙️

⚙️

⚙️

⚙️

⚙️

⚙️

⚙️

⚙️

⚙️

⚙️

⚙️

⚙️

⚙️

⚙️

⚙️

⚙️

⚙️

⚙️

⚙️

⚙️

⚙️

⚙️

⚙️

⚙️

⚙️

⚙️

⚙️

⚙️

⚙️

⚙️

⚙️

⚙️

⚙️

⚙️

⚙️

⚙️

⚙️

⚙️

⚙️

⚙️

⚙️

⚙️

⚙️

⚙️

⚙️

⚙️

⚙️

⚙️

⚙️

⚙️

⚙️

⚙️

⚙️

⚙️

⚙️

⚙️

⚙️

⚙️

⚙️

⚙️

⚙️

⚙️

⚙️

⚙️

⚙️

⚙️

⚙️

⚙️

⚙️

⚙️

⚙️

⚙️

⚙️

⚙️

⚙️

⚙️

⚙️

⚙️

⚙️

⚙️

⚙️

⚙️

⚙️

⚙️

⚙️

⚙️

⚙️

⚙️

⚙️

⚙️

⚙️

⚙️

⚙️

⚙️

⚙️

⚙️

⚙️

⚙️

⚙️

⚙️

⚙️

⚙️

⚙️

⚙️

⚙️

⚙️

⚙️

⚙️

⚙️

⚙️

⚙️

⚙️

⚙️

⚙️

⚙️

⚙️

⚙️

⚙️

⚙️

⚙️

⚙️

⚙️

⚙️

⚙️

⚙️

⚙️

⚙️

⚙️

⚙️

⚙️

⚙️

⚙️

⚙️

⚙️

⚙️

⚙️

⚙️

⚙️

⚙️

⚙️

⚙️

⚙️

⚙️

⚙️

⚙️

⚙️

⚙️

⚙️

⚙️

⚙️

⚙️

⚙️

⚙️

⚙️

⚙️

⚙️

⚙️

⚙️

⚙️

⚙️

⚙️

⚙️

⚙️

⚙️

⚙️

⚙️

⚙️

⚙️

⚙️

⚙️

⚙️

⚙️

⚙️

⚙️

⚙️

⚙️

⚙️

⚙️

⚙️

⚙️

⚙️

⚙️

⚙️

⚙️

⚙️

⚙️

⚙️

⚙️

⚙️

⚙️

⚙️

⚙️

⚙️

⚙️

⚙️

⚙️

⚙️

⚙️

⚙️

⚙️

⚙️

⚙️

⚙️

⚙️

⚙️

⚙️

⚙️

⚙️

⚙️

⚙️

⚙️

⚙️

⚙️

⚙️

⚙️

⚙️

⚙️

⚙️

⚙️

⚙️

⚙️

⚙️

⚙️

⚙️

⚙️

⚙️

⚙️

⚙️

⚙️

⚙️

⚙️

⚙️

⚙️

⚙️

⚙️

⚙️

⚙️

⚙️

⚙️

⚙️

⚙️

⚙️

⚙️

⚙️

⚙️

⚙️

⚙️

⚙️

⚙️

⚙️

⚙️

⚙️

⚙️

⚙️

⚙️

⚙️

⚙️

⚙️

⚙️

⚙️

⚙️

⚙️

⚙️

⚙️

⚙️

⚙️

⚙️

⚙️

⚙️

⚙️

⚙️

⚙️

⚙️

⚙️

⚙️

⚙️

⚙️

⚙️

⚙️

⚙️

⚙️

⚙️

⚙️

⚙️

⚙️

⚙️

⚙️

⚙️

⚙️

⚙️

⚙️

⚙️

⚙️

⚙️

⚙️

⚙️

⚙️

⚙️

⚙️

⚙️

⚙️

⚙️

⚙️

⚙️

⚙️

⚙️

⚙️

⚙️

⚙️

⚙️

⚙️

⚙️

⚙️

⚙️

⚙️

⚙️

⚙️

⚙️

⚙️

⚙️

⚙️

⚙️

⚙️

⚙️

⚙️

⚙️

⚙️

⚙️

⚙️

⚙️

⚙️

⚙️

⚙️

⚙️

⚙️

⚙️

⚙️

⚙️

⚙️

⚙️

⚙️

⚙️

⚙️

⚙️

⚙️

⚙️

⚙️

⚙️

⚙️

⚙️

⚙️

⚙️

⚙️

⚙️

⚙️

⚙️

⚙️

⚙️

⚙️

⚙️

⚙️

⚙️

⚙️

⚙️

⚙️

⚙️

⚙️

⚙️

⚙️

⚙️

⚙️

⚙️

⚙️

⚙️

⚙️

⚙️

⚙️

⚙️

⚙️

⚙️

⚙️

⚙️

⚙️

⚙️

⚙️

⚙️

⚙️

⚙️

⚙️

⚙️

⚙️

⚙️

⚙️

⚙️

⚙️

⚙️

⚙️

⚙️

⚙️

⚙️

⚙️

⚙️

⚙️

⚙️

⚙️

⚙️

⚙️

⚙️

⚙️

⚙️

⚙️

⚙️

⚙️

⚙️

⚙️

⚙️

⚙️

⚙️

⚙️

⚙️

⚙️

⚙️

⚙️

⚙️

⚙️

⚙️

⚙️

⚙️

⚙️

⚙️

⚙️

⚙️

⚙️

⚙️

⚙️

⚙️

⚙️

⚙️

⚙️

⚙️

⚙️

⚙️

⚙️

⚙️

⚙️

⚙️

⚙️

⚙️

⚙️

⚙️

⚙️

⚙️

⚙️

⚙️

⚙️

⚙️

⚙️

⚙️

⚙️

⚙️

⚙️

⚙️

⚙️

⚙️

⚙️

⚙️

⚙️

⚙️

⚙️

⚙️

⚙️

⚙️

⚙️

⚙️

⚙️

⚙️

⚙️

⚙️

⚙️

⚙️

⚙️

⚙️

⚙️

⚙️

⚙️

⚙️

⚙️

⚙️

⚙️

⚙️

⚙️

⚙️

⚙️

⚙️

⚙️

⚙️

⚙️

⚙️

⚙️

⚙️

⚙️

⚙️

⚙️

⚙️

⚙️

⚙️

⚙️

⚙️

⚙️

⚙️

⚙️

⚙️

⚙️

⚙️

⚙️

⚙️

⚙️

⚙️

⚙️

⚙️

⚙️

⚙️

⚙️

⚙️

⚙️

⚙️

⚙️

⚙️

⚙️

⚙️

⚙️

⚙️

⚙️

⚙️

⚙️

⚙️

⚙️

⚙️

⚙️

⚙️

⚙️

⚙️

⚙️

⚙️

⚙️

⚙️

⚙️

⚙️

⚙️

⚙️

⚙️

⚙️

⚙️

⚙️

⚙️

⚙️

⚙️

⚙️

⚙️

⚙️

⚙️

⚙️

⚙️

⚙️

⚙️

⚙️

⚙️

⚙️

⚙️

⚙️

⚙️

⚙️

⚙️

⚙️

⚙️

⚙️

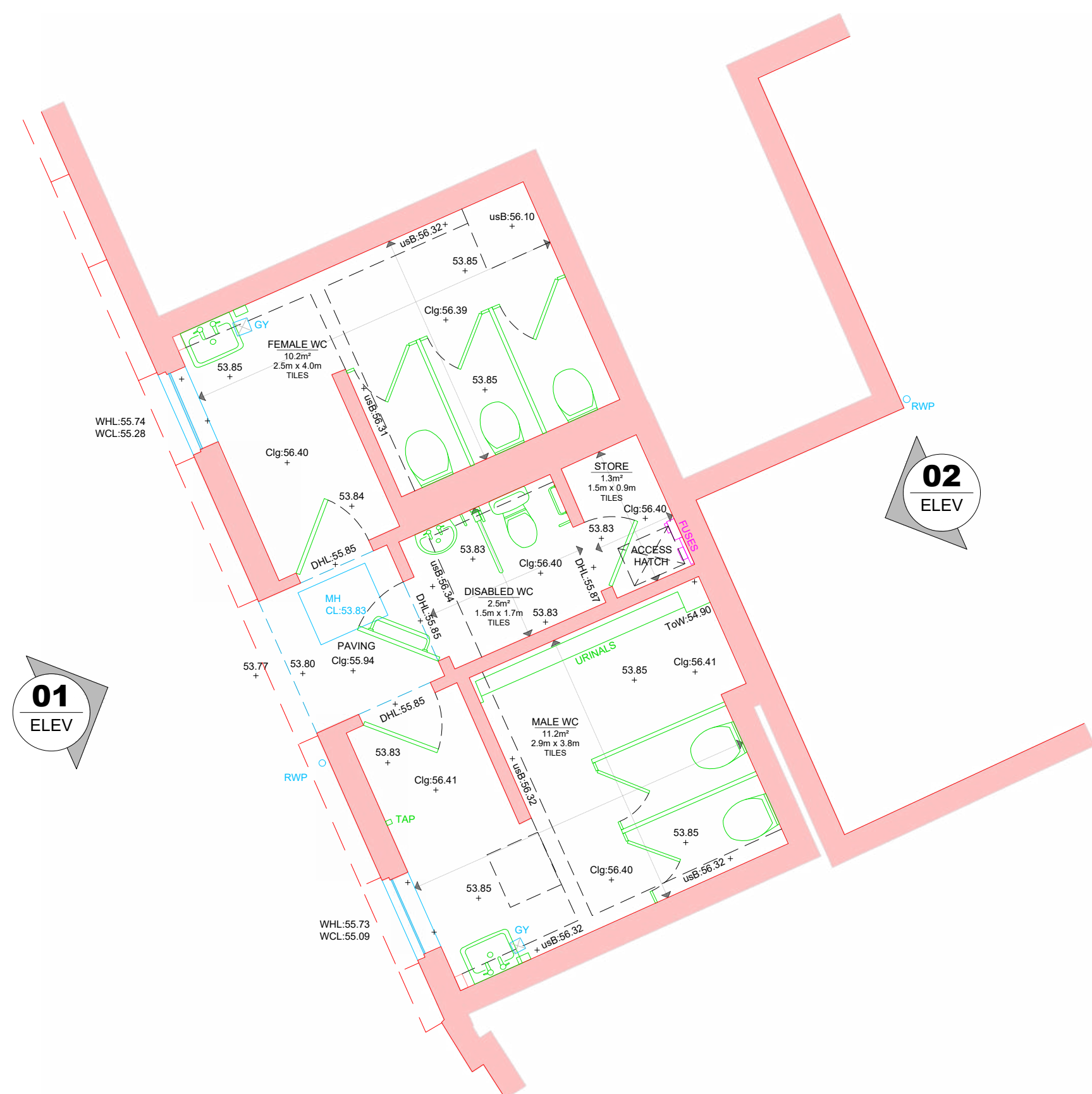
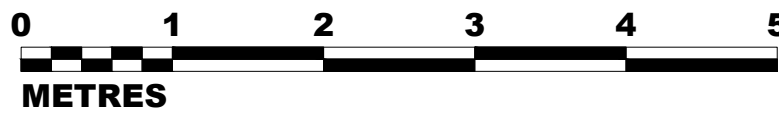
⚙️

⚙️

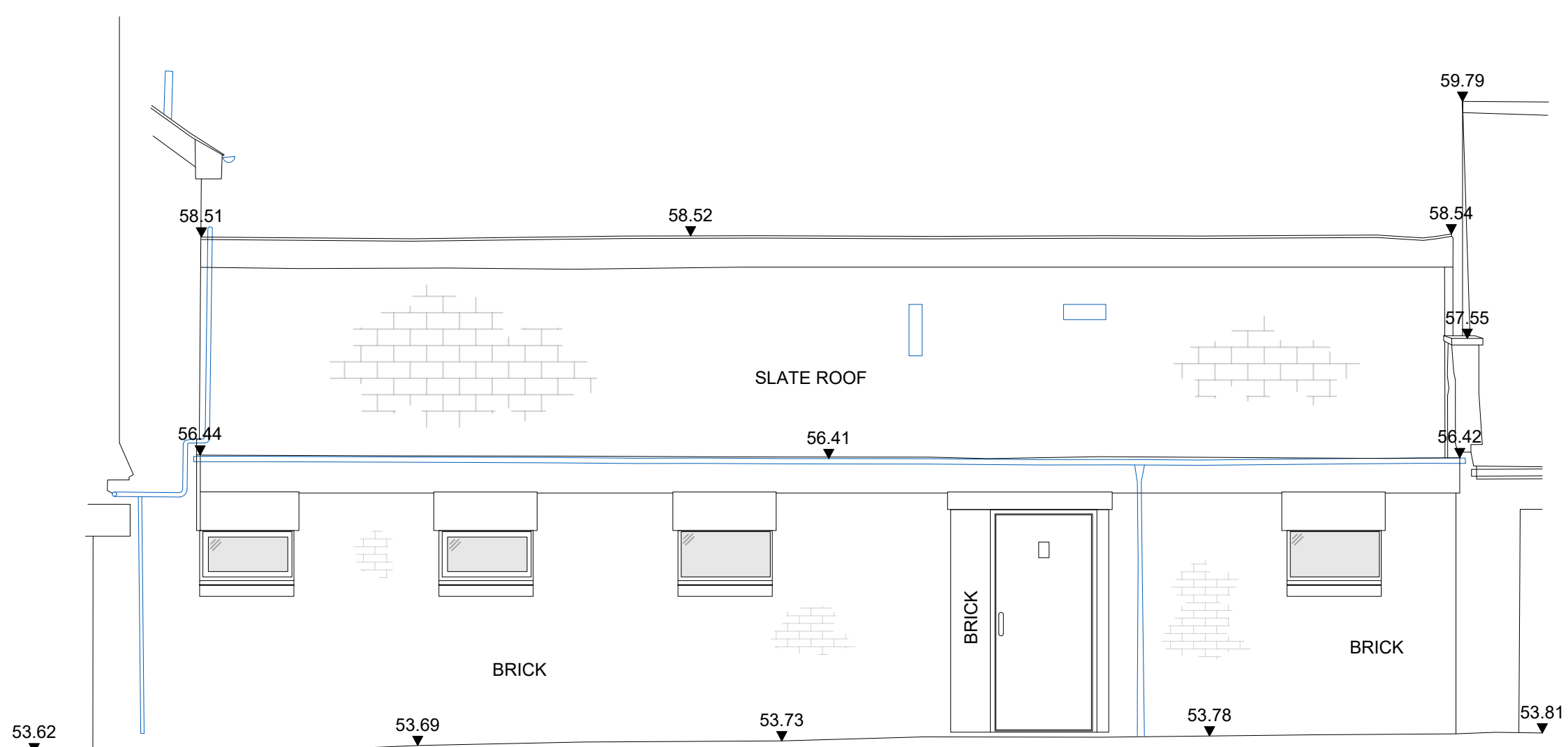
⚙️

⚙️

⚙

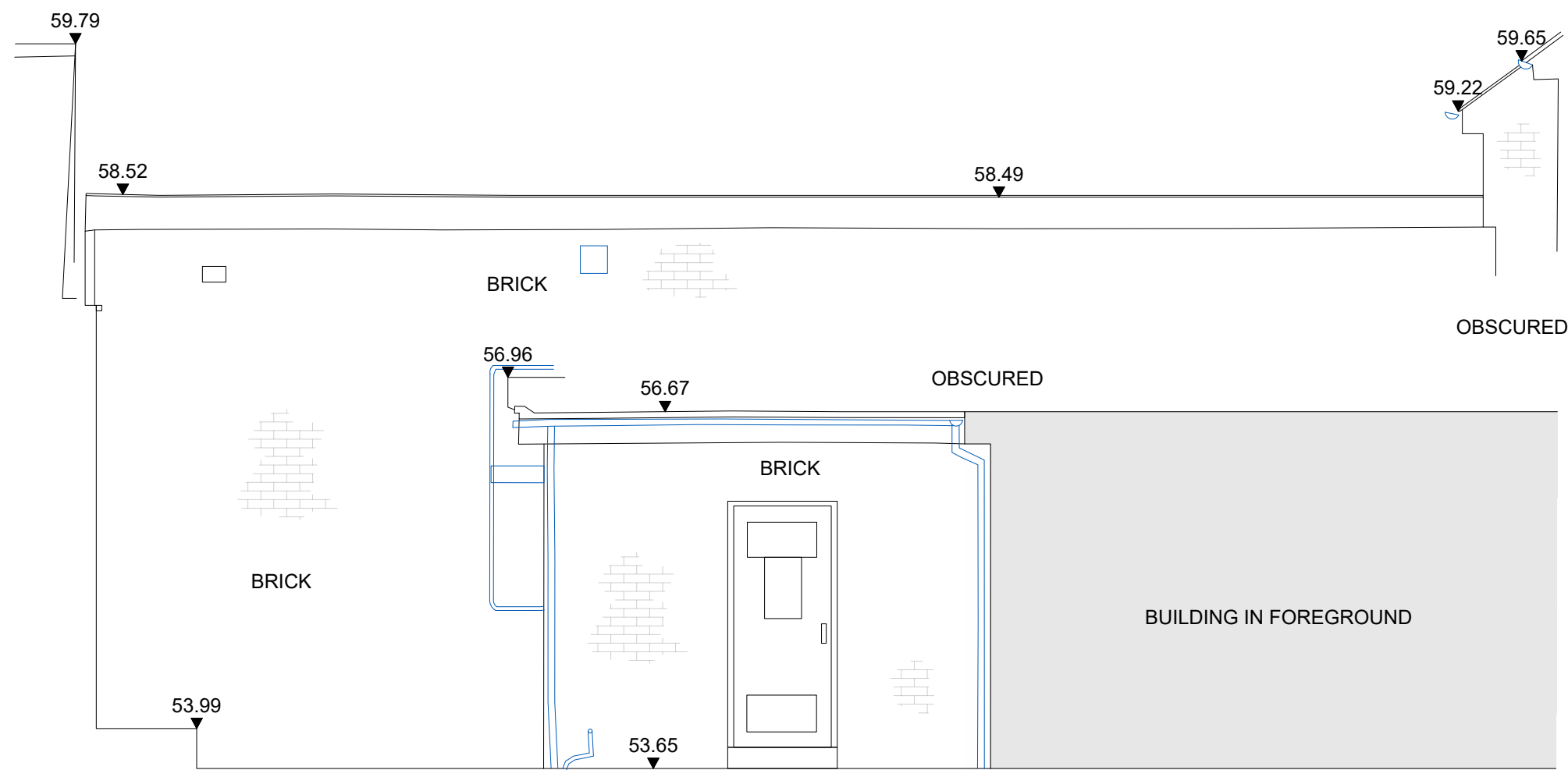


GROUND FLR ROOM AREAS	
MALE WC	11.2m ²
FEMALE WC	10.2m ²
DISABLED WC	2.5m ²
STORE	1.3m ²



ELEVATION 01

50.00m Datum Line



ELEVATION 02

50.00m Datum Line



Scale: 1:50 Plotted on A1	Drawing No: LDS/20898 FP1 © Land Development Services Ltd. 2026	Revision: -
--	---	-----------------------



This is to certify that

**Wilton Town Council
DCS048799
is Disability Confident Committed**

Period of award: 27/01/2026 to 23/01/2029

Issue date: 27/01/2026

As a Disability Confident Committed Employer we have committed to:

- ensure our recruitment process is inclusive and accessible
- communicating and promoting vacancies
- offering an interview to disabled people who meet the minimum criteria for the job
- anticipating and providing reasonable adjustments as required
- supporting any existing employee who acquires a disability or long term health condition, enabling them to stay in work
- at least one activity that will make a difference for disabled people

Find out more about Disability Confident at:

www.gov.uk/disability-confident



#DisabilityConfident